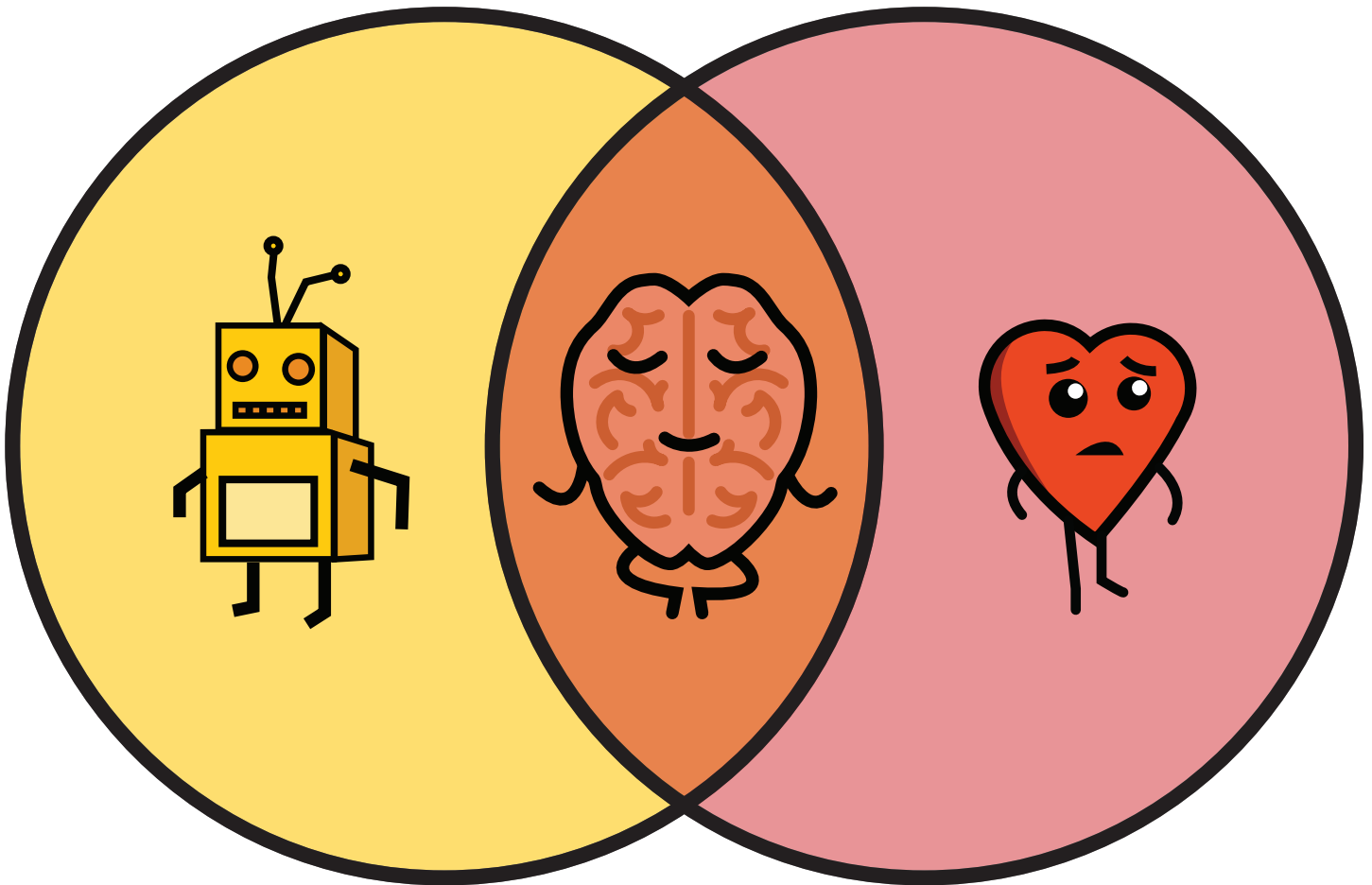


# WISE MIND



## REASONABLE MIND

- Ruled by facts and logic
- Does not take feelings into account when making decisions
- Approaches situations intellectually and makes decisions only on facts

## WISE MIND

- Balance between Reasonable and Emotional Mind
- Wise Mind is able to look at the facts of any situation as well as feelings to make the best decision

## EMOTIONAL MIND

- Ruled by feelings and urges
- Does not take facts into account when making decisions
- Acts impulsively without considering consequences